



# Cobalt<sup>®</sup> Advanced

## BROAD-SPECTRUM, FAST KNOCKDOWN, LONG LASTING RESIDUAL CONTROL

### INSECTICIDE

**Cobalt<sup>®</sup> Advanced insecticide is a high-performance insect management tool with multiple modes of action that delivers fast knockdown and excellent residual to a broad-spectrum of insects in an innovative low-odor formulation.**

#### Cobalt Advanced Labeled Crops:

- Alfalfa
- Cotton
- Corn (*Field, Seed, Sweet*)
- Grain Sorghum
- Soybean
- Sunflower
- Tree Nuts
- Wheat<sup>1</sup> (*only labeled for Wheat in selected U.S. states*)

#### Cobalt Advanced Delivers Powerful, Broad Spectrum, Unsurpassed Insect Control:

- Fast knockdown and excellent residual insect control of major insects.
- With dual modes of action, Cobalt Advanced is an excellent resistance management tool.
- Thorough crop coverage is enhanced through redistribution within the canopy.
- Controls egg, larvae, nymph, and adult developmental stages of various insects such as aphids, beetles, grasshoppers, weevils, and worms.

#### Cobalt Advanced Formulation Details:

- Combines two proven active ingredients in every droplet to maximize uniform coverage and control.
- Better ratio of actives for optimized aphid, beetle, weevil, and spider mite control when compared to Cobalt Insecticide.
- Uniquely formulated as low odor, water-based EW (*Emulsion in Water*).
- Available in 2.5 gallon and 150 gallon containers.

#### Cobalt Advanced Delivers Flexibility for Every Farming Operation

##### Tank Mix Flexibility

- As an EW (*Emulsion in Water*) formulation, Cobalt Advanced is compatible with most other pesticides (*herbicides, fungicides, insecticides*), foliar fertilizer, and adjuvants.<sup>2</sup>

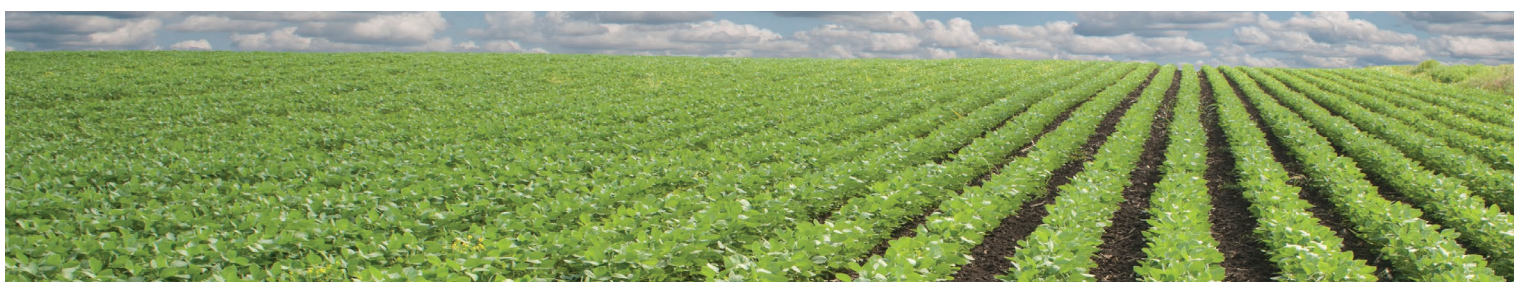
##### Application Flexibility

- Can apply as a Pre-plant, At-plant, Post-plant application.
- Can apply by Air, Ground, or Chemigation equipment.

#### Other Cobalt Advanced Benefits for the Retailer/Grower

- Inventory management – Cobalt Advanced controls many insects in many crops.
- Convenience provided by a single pour and use product
- Re-entry Interval (REI): 24 hours unless required PPE is worn
- Preharvest Intervals (PHI):

Alfalfa	< 13 oz - 7 days
	13-26 oz - 14 days
	> 26 oz - 21 days
Corn	21 days (all purposes)
Soybean	30 days, No Grazing



**Key Crops/Key Pests**

**Use Rate**

**Alfalfa**

Alfalfa weevil <i>(adults and larvae)</i>	19 - 24 fl. oz/ac
Armyworm species	19 - 24 fl. oz/ac
Leaf hopper species	10 - 13 fl. oz/ac



1

**Corn (Field, Seed, Sweet)**

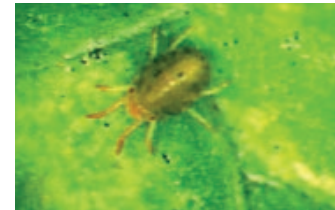
Corn leaf aphids	16 - 24 fl. oz/ac
Cutworms	16 - 24 fl. oz/ac
Rootworm beetle <i>(adults)</i>	16 - 24 fl. oz/ac
Western bean cutworm	16 - 24 fl. oz/ac



2

**Soybeans**

Bean leaf beetles	19 - 24 fl. oz/ac
Japanese beetle	19 - 24 fl. oz/ac
Soybean aphids	13 - 16 fl. oz/ac
Spider mites	20 - 24 fl. oz/ac
Grasshoppers	10 - 13 fl. oz/ac



3

**Sunflowers**

Cutworms	16 - 24 fl. oz/ac
Stem and seed weevils	19 - 24 fl. oz/ac
Sunflower head moth <i>(including banded)</i>	19 - 24 fl. oz/ac



4

**Wheat<sup>1</sup>**

Aphids <i>(cereal, Russian wheat, greenbugs)</i>	10 - 13 fl. oz/ac
Cereal leaf beetle	13 - 16 fl. oz/ac
Wheat midge	13 - 16 fl. oz/ac



5

Refer to the Cobalt Advanced insecticide label for the complete listing of registered crops, use rates and insects controlled. For more information on Cobalt Advanced insecticide, contact your local Dow AgroSciences sales representative.



Solutions for the Growing World



<sup>1</sup>Soybean aphid, David W. Ragsdale, Texas A&M University, bugwood.org, <sup>2</sup>Bean leaf beetle, Jessica Lawrence, Eurofins Agrosience Services, bugwood.org, <sup>3</sup>Arborvitae spider mite, Rayanne Lehman, Pennsylvania Department of Agriculture, bugwood.org, <sup>4</sup>Western corn rootworm, Frank Peairs, Colorado State University, bugwood.org, <sup>5</sup>Japanese beetle, William Fountain, University of Kentucky, bugwood.org

®™ Trademark of the Dow Chemical Company ("Dow") or an affiliated company of Dow  
Cobalt and Cobalt Advanced insecticide are only for registered use on wheat in the following states: AZ, CA, CO, ID, KS, MN, MT, NE, NM, NV, ND, OK, OR, SD, TX, UT, WA, and WY. Always consult the label before purchase or use for full details. Cobalt and Cobalt Advanced are federally Restricted Use Pesticides. Always read and follow label directions. M01-387-003 DAS(11/12) 010-42696