

Realm[®] Q

HERBICIDE

Postemergence broadleaf weed control Two-Pass recommendation



Two-Pass PRE followed by POST Recommendation

DuPont™ Realm[®] Q herbicide delivers

- The flexibility to work in more diverse weather, across more hybrids
- A wide window of application to start early (row & go timing) and still control later-emerging weeds
- Control of waterhemp, lambsquarters and other glyphosate- or ALS-tolerant weeds
- Ease of handling in a convenient dry formulation

Application information

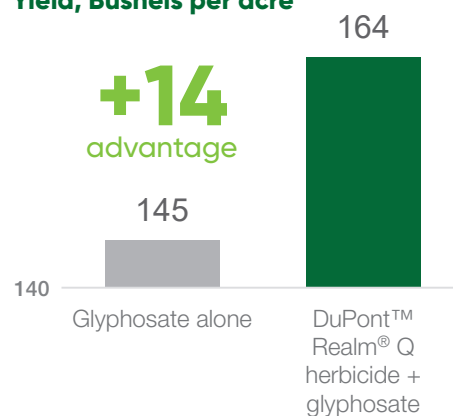
- Realm[®] Q is best used as part of a sequential herbicide treatment, following a before or at-planting application of DuPont™ Basis[®] Blend, LeadOff[®] or Cinch[®] brand herbicides
- While Realm[®] Q has a wide application window, research has shown best results are obtained when applications are made early postemergence (row & go), when corn and weeds are small
- Make postemergence applications of Realm[®] Q to field corn that is up to 20 inches tall, or up to and including six-leaf collars

Convenient dry formulation

Realm[®] Q is formulated using a proprietary blend technology that provides you with:

- Easy-to-handle dry-flowable formulation
- Faster pourability and bottle cleanout
- One of the few dry mesotrione formulations on the market

Yield, Bushels per acre



Source: DuPont field trial; trial conducted with university cooperators and third-party researchers across 20 states, 2004-2007

Yield advantage (DuPont™ Q Product formulations + glyphosate): DuPont data collected from 22 university cooperators and third-party researchers has shown on average a 14 bu/A advantage by tank mixing an additional mode of action to glyphosate that also offers residual control, such as Realm[®] Q.

Two-Pass Recommendation

DuPont™ Basis[®] Blend, or a set-up rate of LeadOff[®] or Cinch[®] brand herbicides

Followed by

DuPont™ Realm[®] Q herbicide 4.0 oz/A

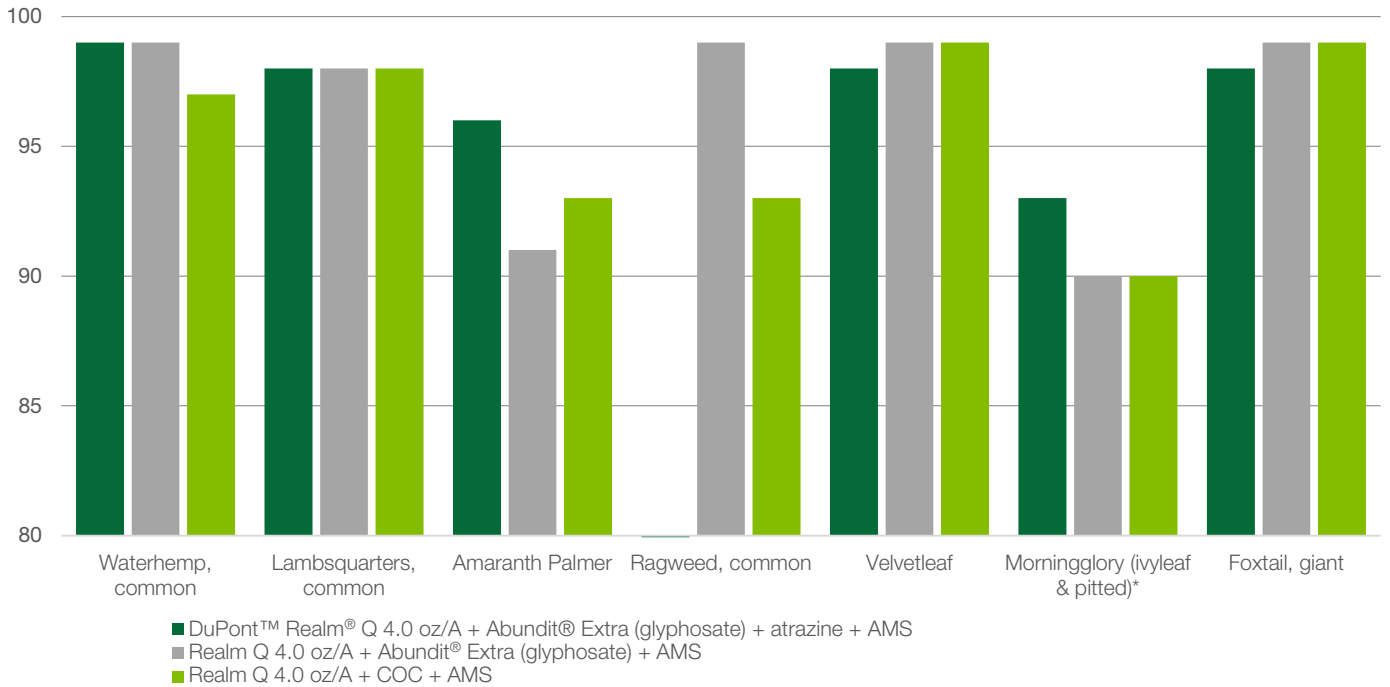
+/- DuPont™ Abundit[®] Edge* herbicide (glyphosate) or Durango[®] DMA[®] herbicide (for use on glyphosate-tolerant crops only)

+/- Atrazine

*Refer to the Abundit Edge and Durango DMA labels for specific AMS and surfactant recommendations.

Weeds controlled

% Control



For more information visit RealmQherbicide.com, call 800-258-3033 or contact your local Corteva Agriscience territory manager.

Visit us at corteva.us

®™Trademark of Dow AgroSciences, DuPont or Pioneer and their affiliated companies or respective owners.

Atrazine and Cinch brand herbicides are Restricted Use Pesticides.

This reference guide is not intended as a substitute for the product label for the product(s) referenced herein. Product labels for the above product(s) contain important precautions, directions for use, and product warranty and liability limitations, which must be read before using the product(s). Applicators must be in possession of the product label(s) at the time of application. Always read and follow all label direction and precautions for use when using any pesticide alone or in tank-mix combinations.

Not all products are registered for sale or use in all states. Contact your state pesticide regulatory agency to determine if a product is registered for sale or use in your state.

Always read and follow label directions. ©2020 Corteva. CA01-629-021 COR (02/20)